



# Lydgate Junior School Curriculum Overview Year 4 Spring term



The theme for this term is...  
**The Amazon/Anglo Saxons**

**English** This term, we will continue to use stories to inspire the children to write. We start with stories of liberation using 'Henry's Freedom Box' by Ellen Levine which tells the incredible story of Henry 'Box' Brown. We will also read 'Moses: when Harriet Tubman led her people to Freedom' by Carole Boston Weatherford. We will write biographies about the amazing American runner Wilma Rudolph using 'Wilma Unlimited' by Kathleen Krull and learn all about the life of ground breaking scientist Margaret Lowman through 'The Leaf Detective' by Heather Lang. Throughout the term, we will work on sentence structure, clauses, conjunctions, prepositions, determiners and speech punctuation. We are really proud of the way our children write. Sharing books and stories at home is a great way to support this. Remember, READ, READ, READ, READ and READ!



**Maths**  
We continue in the new year with a focus on using formal written methods for **MULTIPLICATION** and **DIVISION**. We will also work on **STATISTICS** where we will interpret and use charts, tables and graphs. **FRACTIONS** will come after half term with a recap on unit and non-unit fractions, understanding how equivalent fractions work and learning how to add and subtract fractions. We end the term with a unit on **GEOMETRY** where we will revisit 2D shapes and learn properties of 3D shapes. As always, we will practise x tables!



**Science**  
This term, our science work begins with a topic on the **WATER CYCLE** which follows on nicely from Autumn term's work on states of matter when the children learned about evaporation and condensation. After half term, we will be focusing on **HABITATS** which links really well to our rainforest work. It's a good opportunity to get out and about in our school grounds too. We will also enjoy a visit from Zoolab who will introduce us to some animal friends!

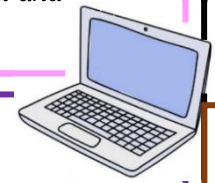


**Humanities** Our topic has a clear geography focus this term. We will be studying life in the **AMAZON** rainforest, looking at location, human and physical features, life on and around the river basin and, of course, the dangers that rainforests face.

After half term, we will embark on a local study on the **ANGLO SAXONS**, where we will be looking at evidence of Anglo Saxon life in Sheffield and the surrounding area, including the Dore Stone, which is right on our doorstep!



**Religious Education**  
This term is all about **SYMBOLS** and **WORSHIP** and their significance in different religions. In Spring 1, we will focus on symbols and worship in Christianity, Islam and Buddhism before moving onto Sikhism, Judaism and Hinduism after half term.



**RRS** In Year 4 this term, the children will be learning more about what it means to be a Rights Respecting School. We will be revisiting and revising the specific language of rights, ie. Inherent, Inalienable, Indivisible, Unconditional and Universal. Mrs Ridsdale has taught us a song which helps us to remember these tricky words! We will be thinking about **BEING SAFE** too, through our work in class, in assemblies and in our ICT lessons.

**Art & Design Technology**  
In art lessons, we will be looking at the work of Margaret Mee, an amazing botanist who studied the flora and fauna of the Amazon. We will use her work as inspiration to make our own **PRINTING** blocks. Our DT focus is **STRUCTURES**. Linked to our work in science and geography, we will be having a go at designing and making our own greenhouses.



**Other Subjects**  
Computing – using Scratch, animation  
PE – rainforest dance, gymnastics, hockey, basketball, swimming  
Music – rainforest soundscapes, Charanga Stop!  
PSHE – health and wellbeing, community  
Forest school sessions are always on Fridays. Each class will have a lesson fortnightly. Please check messages from school for class days.

**Enrichment Activities**  
We have lots going on this term!  
**Jan 11<sup>th</sup> & 12<sup>th</sup>** – visits to Tropical World, Leeds  
**Feb 6<sup>th</sup>** – whole year group performance of 'The Emerald Crown' to families  
**Feb 27<sup>th</sup>** – visit from Zoolab  
**March 26<sup>th</sup>** – Shakespeare workshop from ASCreatives to round off National Shakespeare week.

