



Curriculum Overview Year 6 Spring term



The theme for this term is...

Extreme Environments & Maya

English

In SPaG, we will recap adverbials, prepositions and determiners. We will ensure that we can identify the subject and object in a sentence and apply this to learning about the active and passive voice. Subjunctive mood and standard English will be applied to our writing, which will start with a balanced argument about whether people should be allowed to climb Mount Everest. Following this, our writing will continue to have a geography focus as we learn about Mallory and Irvine's Mount Everest expedition through our geography lessons and book study. We will then write a newspaper report based on their summit attempt. Finally, we will end with narrative units, including the Borrowers.



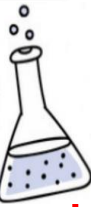
Maths

We will learn about percentage and ratio, followed by a unit on measurement. Converting between measures, finding the area and perimeter and revision of time will be covered. Our next unit will be statistics. We will learn how to find averages, how to handle and interpret data as well as analyse statistics. Finally, we will move to geometry. This will start with revision of 2D and 3D shapes and learning about circles. We will finish the term studying coordinates, reflection, translation and rotation.



Science

Evolution and inheritance: We will look at how living things have changed over time and how fossils provide information about the past. We will learn about evolution and how species adapt over time. **Living thing and their habitats:** We will learn about Carl Linnaeus and his system of classification. We will identify similarities and differences between living things and use classification keys to sort them. We will design our own keys and identify living things in our local environment.



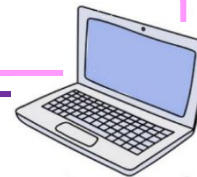
Geography & History

We will continue our topic of **Extreme Environments**. We will compare North America to the UK, then focus on mountains. We will identify the location of mountain ranges around the world, the features of mountains, how they are formed and the impact of climate change. Then we will move onto learning about the **Maya civilisation** and the significant people, places and events over time.



Religious Education

We will identify religions followed in the UK and compare this to our local area and look for similarities and differences in the data. We will find out what community looks like in a range of religions, thinking about aspects such as worship and charity.



RRS

As a Rights Respecting School, some of the Articles that we will be focusing on this term include:
Article 5 Your family has the responsibility to help you learn to exercise your rights, and to ensure that your rights are protected.
Article 13 Every child must be free to say what they think and to seek and receive all kinds of information, as long as it is within the law.
Article 15 You have the right to choose your own friends and join or set up groups, as long as it isn't harmful to others.



Art & Design Technology

In art, our unit is based on Extreme Environments, with a focus on mountains. We will research **mountain landscapes**, create a mood board of ideas and techniques and use a final idea, which will be created using powder paints.
In DT, we will investigate and research pulleys to design a system to use in a **Borrower's house**.



Other Subjects

Computing – American Road trip and mountains spreadsheets
PE – Rugby and yoga or dance (The Haka)
Music – Movie soundtracks and Dance Monkey
RHE – Friendships, family, community and how to save a life
Mandarin – Chinese New Year, school in China and Chinese dining and etiquette

Enrichment Activities

22/1/24 Matilda production at Tapton
2/2/24 Mallory and Irvine Talk
TBC Maya Workshop

